



COMMERCIAL UNIT FOR RENT

1c Stacey Industrial Park, WhiteHouse Farm,
Silchester Road, Berkshire, RG26 3PX



ABOUT US

STACEY DEVELOPMENTS LTD IS THE PROPERTY ARM OF THE STACEY GROUP OF COMPANIES. AS PART OF THE COMPANY PORTFOLIO, THIS 2-YEAR-OLD UNIT, IS ONE OF 28 THAT THE COMPANY OWN AND RENT TO TENANTS. AS A FAMILY RUN BUSINESS, WE WORK WITH OUR TENANTS TO HELP THEM PROSPER.

UNIT SIZE
6,620 sq ft.

OUR FEATURES

- 2 Offices
- 2 Roller Shutter doors
- 5 personnel door entrances
- DDA compliant
- EPC rating A
- Kitchen
- Fitted Solar Panels
- EV Charging Points



BEST OPPORTUNITY

This commercial unit is ideally located in the heart of Tadley, with outstanding transport links that provide easy access to the M3 and M4. The site itself was only developed in 2022 and has ample parking space on site.

 01189 813531

 WWW.JOHN-STACEY.CO.UK

Made with PosterMyWall.com

Front View



Back View



Front & Side View



Side View



Example view of inside the warehouse



Example view of inside the warehouse



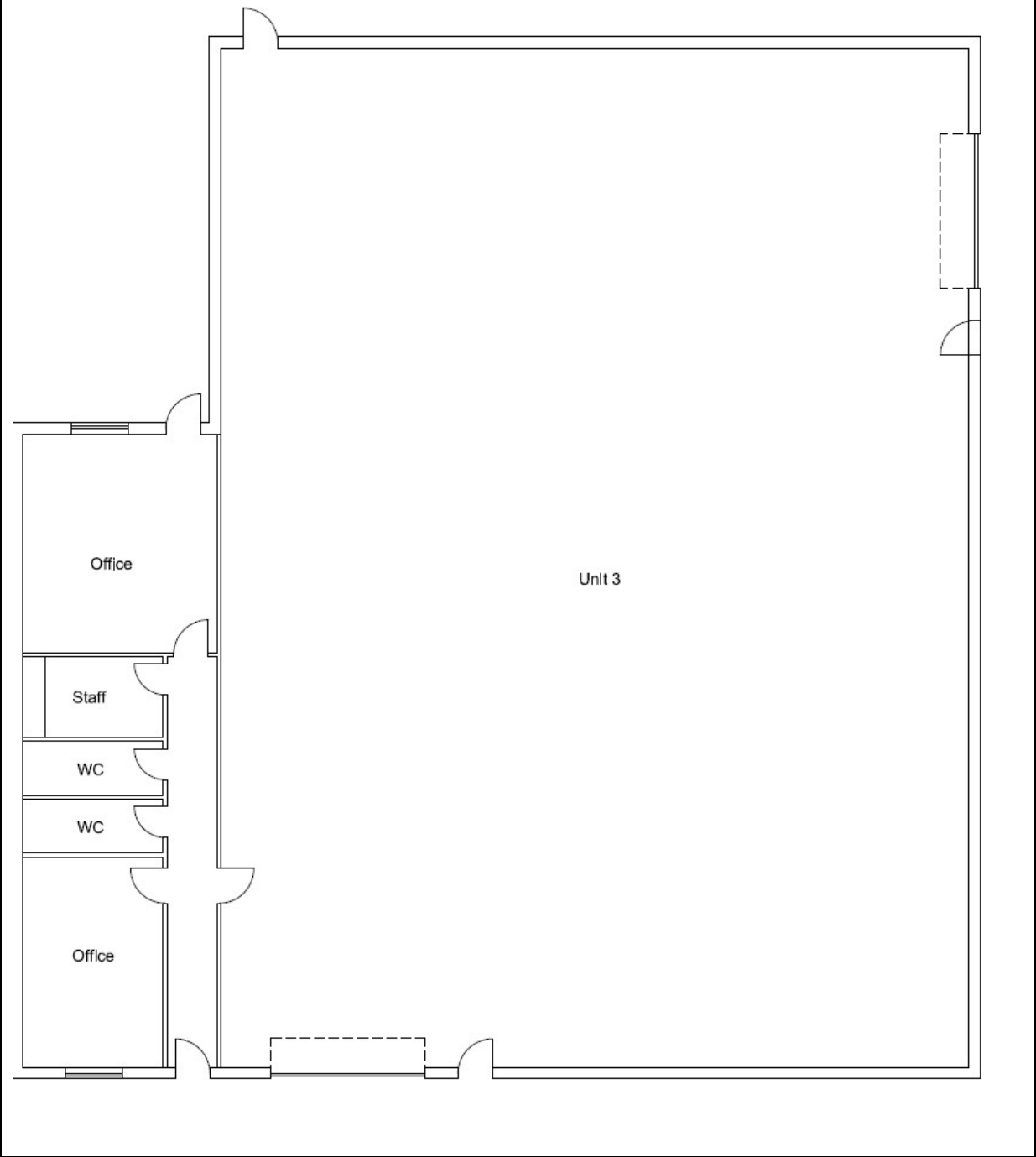
Kitchen



Hall way



Floor Plan



Example of Office

